

# Crest Theatre

# Technical Specifications



**Old  
School  
Square**

---

C U L T U R A L  
A R T S C E N T E R

Old School Square  
51 North Swinton Avenue  
Delray Beach, Fl 33444  
(561) 243-7922  
Fax (561) 243-7018

**Technical Director**

Brian Ridolfo (561) 243-7922 ext. 321 (561) 436-7318 cell

**House Crew**

Stage Manager David London ext. 320  
Audio Engineer Holland Cage Ryan ext. 320

**General Information**

**Auditorium Seating Capacity**

Orchestra	216
Balcony	107
Total	323

**Loading Dock**

The loading dock is located off NE 1<sup>st</sup> Avenue on the east side of the building (west side of the street). There is one bay. The dock is 4'5" high with double doors, each measuring 10' x 5', that open outward and lead into a small receiving area of 189 square feet. The receiving area is actually an extension of the SL wing beyond the back wall.

**Shop**

There is no shop. However, small repairs are possible in the receiving area. We are equipped with only hand held power tools.

**Truck and Bus Parking**

Overnight parking may be available on the property. This must first be discussed with and approved by the Technical Director.

**Directions to Old School Square**

From I-95 south, exit at Atlantic Ave East.  
Continue East on Atlantic Ave approximately 1.5 miles.  
Turn left onto NE 1<sup>st</sup> Ave.  
The rear theatre entrance is toward the end of the block on the west side of the road.

From I-95 north, exit at Atlantic Ave  
Continue East on Atlantic Ave approximately 1.5 miles.  
Turn left onto NE 1<sup>st</sup> Ave.  
The rear theatre entrance is toward the end of the block on the west side of the road.

From the Ronald Reagan Turnpike, exit at Delray Beach.  
Continue East on Atlantic Ave approximately 5 miles.  
Turn left onto NE 1<sup>st</sup> Ave.  
The rear theatre entrance is toward the end of the block on the west side of the road.

## Stage Specifications

STAGE FLOOR- Tongue and Groove Southern Yellow Pine stained black. The floor is supported by a 2" x 3" x 4' sleeper system with isolating rubber pads secured to the underside on 12" centers and 3/8" x 2 1/4" x 3" neoprene pads between the floor strips and sleeper system to provide resilience.

HEIGHT OF PROSCENIUM (basket arch)	14' at center 10' sides
WIDTH OF PROSCENIUM	30'8"
APRON (from US edge of proscenium)	8'1" at center 6'8" sides
DEPTH OF STAGE (from US edge of proscenium)	32'5"
TOTAL DEPTH OF STAGE (center apron to US wall)	40'6"
WIDTH OF STAGE (wood deck)	48'
Center to SR	24'
Center to SL	24'
WIDTH OF SR WING (concrete)	12'
WIDTH OF SL WING (concrete)	10'5"
CENTER STAGE TO LOCKING RAIL	34'5"
CENTER STAGE TO PIN RAIL	30'5"
HEIGHT OF LOADING GALLERY/PIN RAIL	18'2"

CROSSOVER-located behind the stage. It is 5'- 6" wide.

## **Rigging Specifications**

LINE SETS-Single purchase hand operated from SL stage level.

NUMBER OF AVAILABLE LINE SETS	15
FULL OUT TRIM (from stage floor)	29'
FULL IN TRIM	5'

NUMBER OF AVAILABLE LIGHTING SETS	4
FULL OUT TRIM (from stage floor)	22'
FULL IN TRIM	5'

MAXIMUM WEIGHT PER ARBOR	1,500 lbs
--------------------------	-----------

TOTAL WEIGHT AVAILABLE	12,000 lbs
------------------------	------------

LENGTH OF BATTENS	48'
-------------------	-----

HOUSE CURTAIN-is navy blue and located 1' from US edge of proscenium. It will both fly and travel. Full in trim on this line is 6'

GRID-There is no grid. I- beams are at an elevation of 32'. They run up and down stage on 10' centers beginning 5' off center stage left and right.

## Line Schedule

Line #	Distance from Proscenium	House Hang	Notes
1	1'- 4"	Grand Drape	Travel or Fly
2	2'- 0"	Projection Screen	
3	2'- 8"	1 <sup>st</sup> Legs	
4	4'- 8"	1 <sup>st</sup> Electric	
5	7'- 4"	2 <sup>nd</sup> Border	
6	8'- 0"	2 <sup>nd</sup> Legs	
7	8'- 8"		
8	10'- 8"	2 <sup>nd</sup> Electric	
9	13'- 4"	3 <sup>rd</sup> Border	
10	14'- 0"	3 <sup>rd</sup> Legs	
11	14'- 8"	Mid-Stage Traveler	
12	16'- 8"	3 <sup>rd</sup> Electric	
13	20'- 8"	4 <sup>th</sup> Border	
14	21'- 4"	4 <sup>th</sup> Legs	
15	22'- 0"	Scrim	
16	24'- 0"	Cyclorama Electric	
17	29'- 8"		
18	30'- 8"		
19	31'- 4"	Cyclorama & Legs	

## Soft Goods

1	Navy Blue Grand Drap	100% Full	2 halves 16' x 22'
1	Black Velour Traveler	50% Full	2 halves 18' x 25'
1	White Leno Filled Scrim		20' x 50'
1	Black Sharkstooth Scrim		18' x 50'
4	Pairs Black Velour Legs		18' x 12'
1	Pair black Velour Legs		20' x 12'
4	Black Velour Borders		6' x 50'

## Lighting System

**Console** E.T.C. Insight 3.X with Remote Focus Unit

**Dimmers** E.T.C. L86 82 Dual 20A modules for a total of 164 dimmers

### Lighting Instruments

30	Source 4 36°	575w
29	Source 4 26°	575w
10	Source 4 19°	575w
20	Source 4 PAR	575w
28	Altman 4.5" Ellipsoidal Zoom	750w
16	Altman 6" Fresnel	750w
30	Theatrical Par 64	1k wide floods
10	Altman 6" x 9"	750w
10	Altman 6" x 12"	750w
5	Altman 6" x 16"	750w
4	Altman 4 Cell Sky Cyc	1.5k

### Spotlights

2	Strong Radiance	450w metal arc
1	Lycian 1266	400w HTI

### Accessories

12	10" x 10" Top Hats	2	14' Boom Pipes
18	7 ½" x 7 ½" Barn Doors	12	24" Side-arms
25	Altman Template Holders	12	Source 4 Template Holders "B"
8	50 lb Boom Bases	20	Source 4 Template Holders "A"
6	12' Boom Pipes		

### Stage Cable

1	10'/20A	2	30'/20A
1	20'/20A	7	50'/20A
5	25'/20A	30	24'/20A twofers

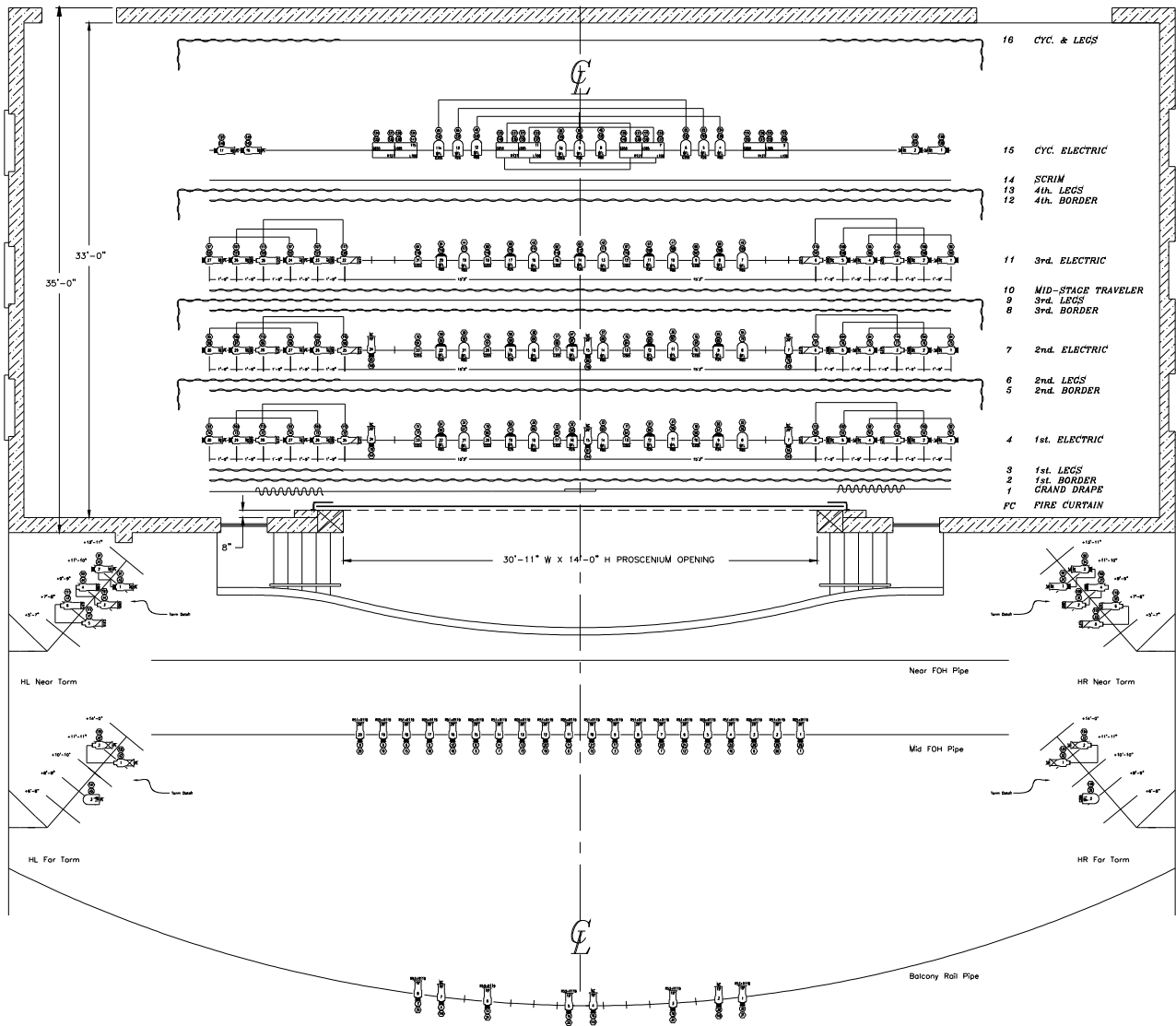
### Miscellaneous Lighting Equipment

4	16' Clear Light Rope with Variable Speed Controller
3	Star Strobes

### Circuit Locations

3-30	Far FOH	99-122	3 <sup>rd</sup> Electric
31-35	HL Far Tormentor	123-146	4 <sup>th</sup> Electric
41-45	HR Far Tormentor	147-150	DSL Wall Pocket
51-74, WL-3	1 <sup>st</sup> Electric	155-158	DSR Wall Pocket
75-98, WL-4	2 <sup>nd</sup> Electric		

NOTE: The Near and Mid FOH positions were added after the installation of the lighting system and therefore have no circuits of their own. In order to provide power 15A multi cable was run from the Far FOH position so that circuits 3-30 may be utilized in the new positions.



35'-0"  
33'-0"

- 16 CYC. & LEGS
- 15 CYC. ELECTRIC
- 14 SCRIM
- 13 4th. LEGS
- 12 4th. BORDER
- 11 3rd. ELECTRIC
- 10 MID-STAGE TRAVELER
- 9 3rd. LEGS
- 8 3rd. BORDER
- 7 2nd. ELECTRIC
- 6 2nd. LEGS
- 5 2nd. BORDER
- 4 1st. ELECTRIC
- 3 1st. LEGS
- 2 1st. BORDER
- 1 GRAND DRAPE
- FC FIRE CURTAIN

30'-11" W X 14'-0" H PROSCENIUM OPENING

HL Near Torm

Near FOH Pipe

HR Near Torm

HL Far Torm

Mid FOH Pipe

HR Far Torm

Balcony Rail Pipe

## Audio System

### FOH Console

Crest Audio "X- Eight RT" with 24 mono XLR inputs, 4 Stereo inputs, 8 groups, 8 aux sends, 4x12 matrix, 128 mute scenes, and true left/right/center control.

### Speaker System

Nexo Geo Tangent Line Array consisting of a total of 14 tangent array modules, and 4 hypercardoid subbass modules. Both left and right arrays include 6 S805 5-degree modules, 1 S830 30-degree module, and 2 CD12 hypercardoid sub bass modules. The arrays are comprehensively controlled by 2 Nexo NX241 digital Tdcontrollers and are powered by 4 Camco vortex 6 amplifiers. A 4-channel Ashly Protea 4.24gs digital graphic equalizer controls house and monitor EQ;''''.

### Monitor System

Nexo 2 way passive Ps8 loudspeaker system consisting of a total of 4 Ps8 stage monitors on 2 mixes. The system is controlled by 1 Nexo Ps8 Tdcontroller and powered by 1 Chevin Reasearch Q4. EQ is Ashley Protea 4.24gs digital graphic equalizer. 2 additional mixes are available and consist of a Mackey 2400w and White Digital EQ. Monitor Wedges can be any of the following:

- 2 Yamaha s12me Stage monitors 12" 2 way
- 2 JBL SR4704 15" 2 way stage monitor
- 2 Turbosound TXD 12M

### FOH Outboard Gear

- Marantz professional combination cassette deck/CD player
- Carver CD player
- Sony combination mini-disk player/recorder and CD player
- Kenwood dual cassette deck
- Lexicon **MPX 200** true stereo, dual channel effects processor
- DBX 266xl stereo compressor limiter
- 5 Symtrix Sx201 parametric equalizers
- 1 DBX 166 dual compressor limiter
- 1 Symtrix 501 compressor limiters
- Ashly Protea "4.24GS" 4 channel digital graphic equalizer
- Toa 70v program system throughout the building
- ART 351 31 band graphic equalizer
- Stage Reasearch SFX Live software

## Audio System Continued

### Wireless Microphones

4	Sennheiser Evolution 300 Series EM300 receivers
2	SK 300 body pack transmitters with ME2 omni lavalier microphones
3	SKM 300 handheld transmitters with MD845 microphone heads

### Microphones

5	Sennheiser 735	3	Audio-technica AT8531
5	Shure SM57	6	Shure SM58
1	Shure SM87	10	Sennheiser E604
1	Sennheiser E602	2	Sennheiser K6-ME64
4	Senheiser 905	3	Beyer Dynamic MPV 65
2	Senheiser MD421	1	Ev Mc300
2	AKG CK9	8	DI Boxes

### Communications System

2 channel clear com with stations through out the building

### Assisted Listening System

Sennheiser infrared- 15 units

### Sound Cable

15	25' XLR	20	50' XLR
10	25' ¼ Phono	6	50' Speak-On
10	10' XLR		

### Stands

10	Floor Stands	10	Boom Arms
10	Tripod Stands	8	Table Top Stands
4	Goose Necks		

## Video System

### Projector

Sanyo PLC-XF45 - 10,000 ANSI Lumens, XGA (1024 X 768) Resolution, 1100:1 contrast ratio

### Lenses

Sanyo LNS-W06      1.2-1.5:1 throw ratio  
Sanyo LNS-S02      2.0-2.6:1 throw ratio

### Screen

Dalite fast fold deluxe, 10.5' x 14' viewable, rear projection surface

### Source Gear

Sony DVD Player  
Toshiba VHS

### Video Cable

1	50' VGA	1	100' Female to Female RCA
2	6' DVI	1	6' VGA

## Wardrobe

There is 1 super capacity 2 speed washing machine, 1 large capacity electric dryer, 1 iron and ironing board, and 1 Jiffy Steamer

## Dressing Rooms

There are a total of 4 dressing rooms. 2 are located on the SR side of the backstage crossover. Both can accommodate 6 adults. They are equip with toilet and shower, full length mirrors, make-up lighting and mirrors, dressing tables, Clear Com communications center, and a show monitor. Each dressing room has approximately 4' of costume rack. The remaining two dressing rooms\* are located on the second floor directly above the downstairs dressing rooms. The staircase leading to them is in the center of the backstage crossover. Each can accommodate 20 adults. They are equip with toilet and shower, full length mirrors, make-up lighting and mirrors, dressing tables, Clear com communications center, and a show monitor. Each dressing room has approximately 24' of costume rack.

\*Please note one of the dressing rooms has been converted into a green room. It can be turned back to a dressing room with minimal effort.